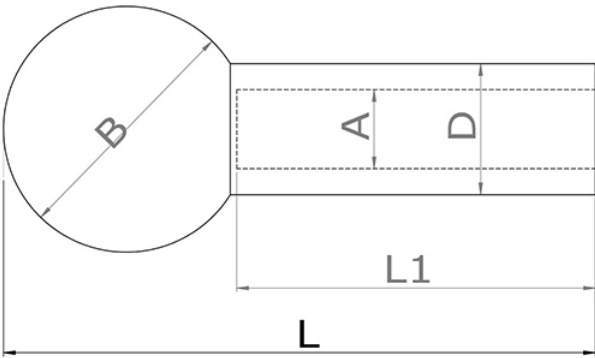


# BZP Swage Nipple Bell End



Product	A (mm)	B (mm)	L (mm)	D (mm)	L1 (mm)	Suit Wire Diameter (mm)
Swage Bell End Terminal	4.4	13.7	33	7.3	20	4

Note - Product sizes are liable to change from time to time, if your dimension requirements are critical, please contact us.